

January 2023

Issue 16

Washington County Department of Human Services



IN THIS ISSUE

PG. 2

Dates to Remember

PG. 3

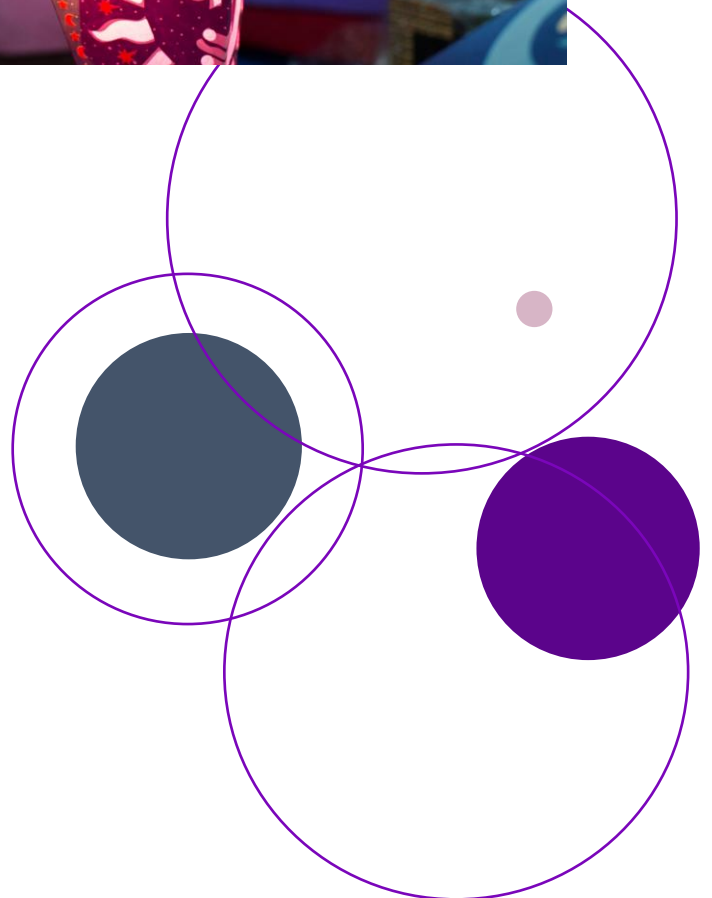
Washington County Department of Human Services-1234 Help Center

PG. 4-5

Human Trafficking Awareness/Stalking Awareness Month-Guest Columnist-Joanna Dragan

PG. 6-7

Provider Spotlight-Wesley Family Services



Spirit Night

Thursday, February 2, 2023, 4:00pm – 8:00pm



Join us for food and fun. Come support Washington Drug and Alcohol Commission – Problem Solving Courts and 20% of tonight's sales will be donated accordingly.

 Washington (PA) FSU
375 Washington Rd. Washington, PA 15301
<https://www.chickfilarestaurant.com/washington-pa/>
<https://www.facebook.com/WashingtonPAChickfilA/>
© 2021 CFA Properties, Inc. Chick-fil-A® and Chick-fil-A Script® are registered trademarks of CFA Properties, Inc.

Dates to Remember

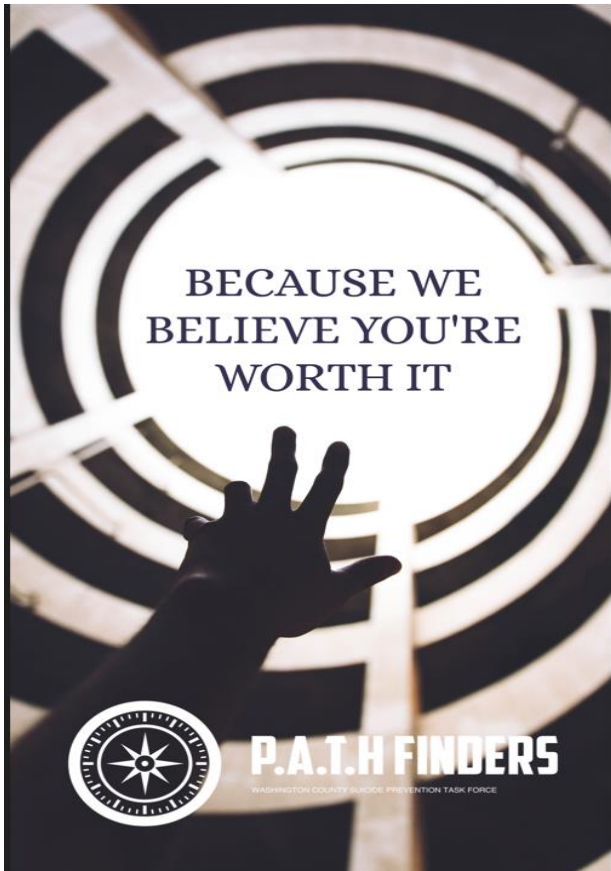
January 2023

January 10-Salvation Army Produce Distribution

January 24 at 10:00: PATHfinders Meeting (Suicide Prevention Task Force) [Click here to join the meeting](#)

February 2 from 4:00-8:00: Specialty Court Fundraiser

We are now accepting submissions for the February, March, and April newsletter. Please reach out to Rebecca Salsbury at Rebecca.Salsbury@co.washington.pa.us if you are interested in being a guest columnist or if you know of any upcoming events!



Department of Human Services Centralized Intake/1234 Help Center



Finding help is as easy as 1-2-3-4!

The residents of Washington County can now access all of the agencies of services offered in Washington County Human Services by calling 724-228-1234.

A human services coordinator is ready for your call and will assist you in coordinating the support services you need.

We Are Here to Help!



Washington County

Department of Human Services

**Need help finding
resources?**

**Getting Help is
Easy as 1234!**

**Human Services
Coordinators are here to
assist you
724-228-1234**

Human Trafficking Awareness/Stalking Awareness Month

Guest Columnist: Joanna Dragan, SPHS CARE Center STTARS Program

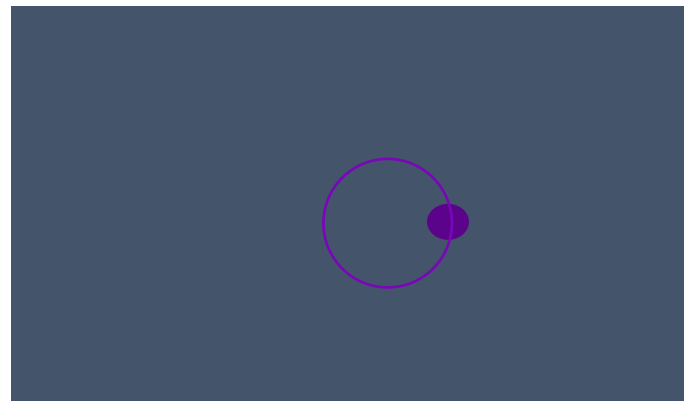
January is Human Trafficking Awareness Month as well as Stalking Awareness Month. It is important to know how to recognize the signs of these and other abuses to stop them from happening in our communities and support those affected by these crimes.

What is Human Trafficking? Human Trafficking is a form of modern-day slavery where traffickers profit from the exploitation of others.

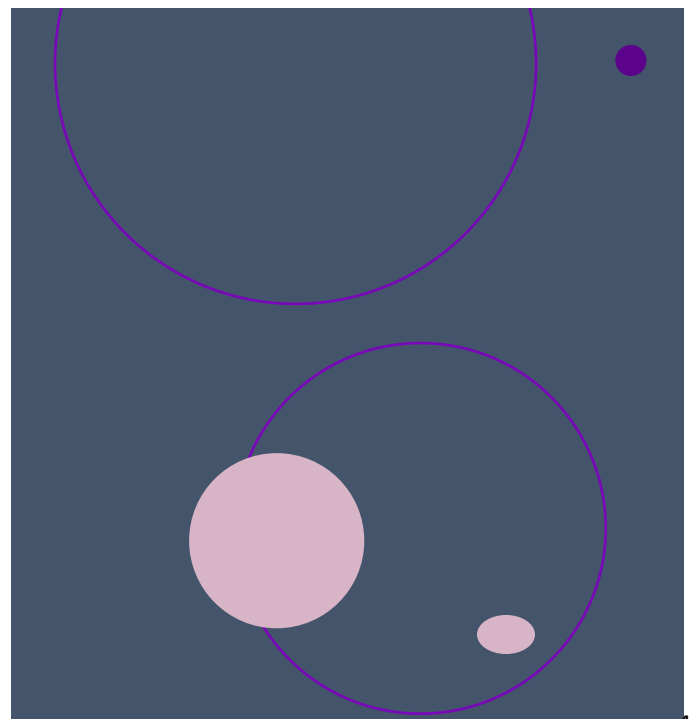
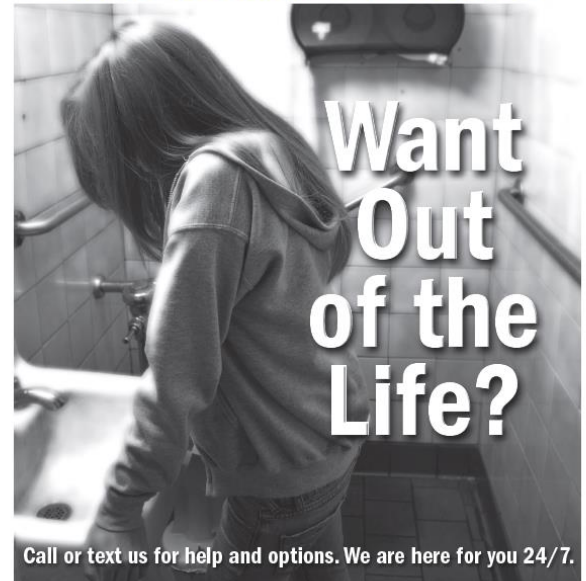
Trafficking can take different forms. Sex trafficking includes commercial sexual exploitation of children, as well as instances where an adult is in the sex trade as the result of force, fraud, or coercion. Labor trafficking occurs when a person is forced or coerced to provide labor or services for the economic benefit of the trafficker.

Even though awareness of this crime is growing, human trafficking continues to go unreported due to its isolating nature, the misunderstanding of its definition, and the lack of awareness about its indicators.

According to the Stalking Prevention and Awareness Resource Center (SPARC), stalking is a pattern of behavior directed at a specific individual that would cause a reasonable person to fear for their safety or the safety of others; or suffer substantial emotional distress. Stalkers use a variety of tactics, including (but not limited to): unwanted contact including phone calls, texts, and contact via social media, unwanted gifts, showing up/approaching an individual or their family/friends, monitoring, surveillance, property damage, and threats. Anyone can be a victim of stalking. A majority of stalking victims are stalked by someone they know: a current or former intimate partner, acquaintance, or family member.



Call the National Human Trafficking Hotline at 1-888-373-7888
Text the BeFree Text Line at 233733



It is up to every business, community organization, faith community, family, and individual to make a difference by choosing products that are not made by forced labor; by working to protect our young people from sexual exploitation; by addressing the problem of internet sex trafficking and pornography; and by becoming more aware of the behaviors and attitudes that are conducive to sexual abuses. We must work together to find solutions.

The SPHS CARE Center STTARS Program staff has been trained to provide counseling and advocacy to survivors of sexual abuse, harassment, and assault, including sex trafficking and stalking in Washington and Greene Counties, and are proud to serve as a core team member of the Washington County Human Trafficking Taskforce. Increased community education on how to identify victims of human trafficking and sexual violence along with increased knowledge of local resources and services for those affected by these criminal actions, can help restore freedom and dignity to identified survivors, as well as diminish the number of future victims. We offer training for allied professionals and the community regarding a variety of sexual violence issues. If you would like to learn more about addressing and preventing these crimes and how to support survivors, you can call the STTARS Program at 724-229-5007.

The National Human Trafficking Hotline can be reached at: 1-888-373-7888.

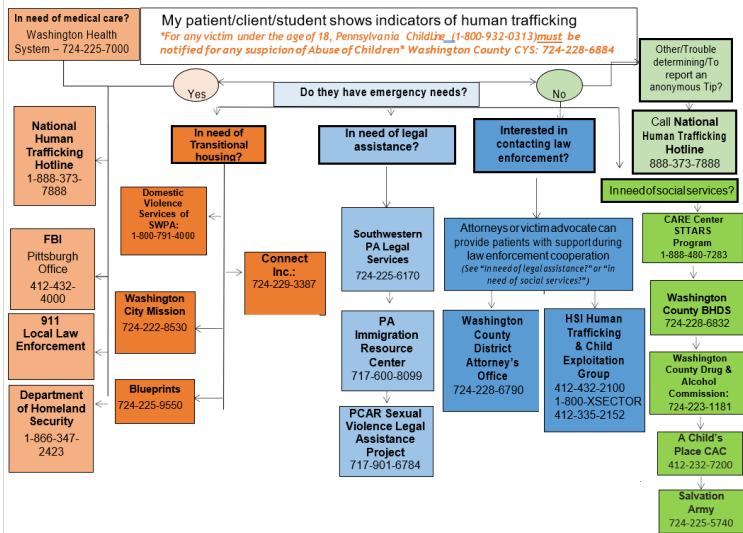
Additional resources available on Human Trafficking and Stalking include:

Polaris Project: polarisproject.org

Department of Homeland Security Blue Campaign: dhs.gov/blue-campaign

SPARC: stalkingawareness.org

Human Trafficking Referral Flowchart



Wesley Family Services

Provider Spotlight Information provided by:

Casey Nowicki

Director of Organizational Advancement, Wesley Family Services

Wesley Family Services is a 501(c)(3) organization that provides a diverse range of quality behavioral healthcare, and social and educational services to more than 20,000 individuals throughout Western Pennsylvania annually. We are a multi-service system provider which allows us to serve people with multiple needs that require integrated care. We provide education, behavioral health, child welfare, juvenile justice, intellectual and developmental disability services (IDD), aging services, and social support services. Our agency is a result of a merger that occurred in 2017 when Wesley Spectrum and Family Services of Western Pennsylvania joined forces to form a larger, united organization that would be equipped to meet the needs of children, adults, and families throughout their lifespan.

Wesley Family Services operates over 50 services throughout Southwestern Pennsylvania. These services include a continuum of Behavioral Health services from our most intensive DAS and ACT programs for adults and Partial Hospital and FBMH services to children and families to MH OP levels of care in both clinic and school-based settings. We have expertise with certain populations such as individuals with ASD, SPMI, and transition-aged individuals seeking Behavioral Health care. We have created an array of services specifically for the treatment of Autism, through our Autism Center of Excellence that addresses the lifespan needs of this population. We provide specialized education services and operate one elementary-middle school in Upper St. Clair Township and one high school in Whitehall Borough where behavioral health OP and PHP services are integrated into the student's care. We also recently opened a therapeutic Kindergarten Readiness program in Monroeville. We offer both residential and day programs for individuals with IDD including 22 single-family homes for individuals with intellectual and developmental disabilities. Through our SBBH services, we offer behavioral health support services to 50 school districts throughout the region. We offer foster care and adoption services, family preservation and parent education services, and aging services to support senior citizens with their unique needs. Our services for older adults include care management and volunteer-assisted services.

We have a presence in Beaver, Butler, Lawrence, Allegheny, Westmoreland, and Washington counties. For Washington County residents, services are provided at our facility located downtown in the city of Washington. Residents of the area have access to our acute partial and partial hospital services (for children/students), psychological diagnostic evaluations, and mental health outpatient services.

We currently provide contracted school-based behavioral health services to Canon Mac School District. Additionally, we provide autism



Crystal Campasano





Wesley Family Services - Washington County
90 West Chestnut, Suite 200EW
Washington, PA 15301
724-222-7500



outpatient services, family-based mental health services, foster care, adoption, and post-permanency services, as well as a foster grandparent program out of our Washington office.

Providers or consumers interested in accessing our services should call 1-888-222-4200 or 412-342-2270 and our team will connect you appropriately. We also provide services virtually if consumers are more comfortable with that setting, but that is after we have worked with you to determine what support services you could benefit from.

We also encourage providers and consumers to visit our website which provides a description for all the services we offer: <https://wfspa.org/>.

Our autism outpatient services are tailored for individuals with ASD (children and adults) and/or their family members at a frequency and intensity that will best support the individual's unique needs. Crystal Campasano (*featured in the photo*) is our autism outpatient therapist, and she sees clients and their families once a week on Fridays.

Additionally, our mental health outpatient services in our Bridgeville office include mental health assessments and psychiatric evaluations and medication monitory, tailored plans for individual, family, and group therapy options for children and adolescents.

Our foster family care, adoption, and permanency services team secures safe homes for children and teenagers that can no longer reside with their birth parents. Whether they are placed in foster care and need a temporary home for a while, or whether they need a permanent one, we work to find adults and families that can provide them with a safe, secure, and loving home. We are a member of the Pennsylvania Statewide Adoption and Permanency Network (SWAN) and help to provide adoption and permanency services on behalf of the state's child welfare agencies.

Our foster grandparent program is a stipend volunteer program that provides volunteer opportunities to limited-income adults ages 55 and over. We administer this program on behalf of AmeriCorps and our foster grandparents go into local classrooms and serve as mentors. They work in private and public schools, Head Starts, daycares, and child development centers to assist children by developing their skills in literacy, language, math, and cognitive development, as well as improving essential social and emotional intelligence.

Our care model, Quality Whole Person Care (QWPC), is centered on the "whole" of the person and overall wellness. QWPC also addresses multiple, interdependent dimensions of overall wellness including social, physical, emotional, intellectual, spiritual, occupational, financial, and environmental. QWPC uniquely involves every level of the organization eradicating the barriers of traditional siloed care which improves communication and care. We know that the people we serve have different and unique needs, and that every person and family must be viewed through a holistic lens. Events, situations, barriers, and challenges throughout one's life, as well as other factors including community resources, all play a role in how support services can be provided, accessed, and received. While we do not know the solution to every systemic issue, we are committed to the rigorous pursuit of identifying and measuring potential gaps and disparities that exist when consumers are navigating challenges in their lives.